

Bus bar connection

Verify after repair

Hot fuse

Energy loss

Applications

Temperature changes can indicate problems in many areas you see everyday, including:

Electrical distribution and service

- Switch gear
- Panels
- Controls
- Fuses
- Transformers
- Receptacles
- Lighting
- Conductors
- Bus bars
- Motor control centers

- Energy loss
- Insulation
- Moisture
- Heating systems
- Air conditioning
- Water pipes

**For more information head to:
www.fluke.com.au**

	Ti9
Detector size	160 x 120
Thermal sensitivity (NETD)	≤0.2 °C at 30 °C (200 mK)*
Field of view (FOV)	23 ° x 17 °
Minimum focus distance	15 cm
Temperature range	-20 °C to +250 °C

For full specifications go to www.fluke.com.au



Includes everything you need to get started:

SmartView® analysis and reporting software, 2 GB SD card, SD card reader, hard and soft carrying case, hand strap, rechargeable battery,

AC charger/power supply, training DVD.

Ordering Information

Fluke Ti9 Electrical - Thermal Imager

Fluke. Keeping your world up and running.®

For more information, visit us at www.fluke.com.au

© Copyright 2011 Fluke Corporation. All rights reserved. Prices are in AUD and excluding GST. Data subject to alteration without notice.

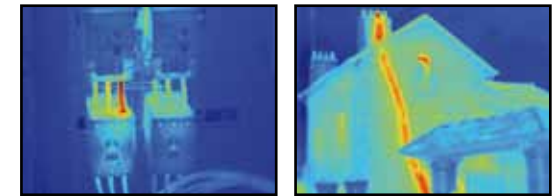
FLUKE®



**\$2900
AUD**

Fluke Ti9 Electrical - Thermal Imager

The rugged and affordable tool for electricians and technicians



- **Point**
- **Pull the trigger**
- **Get the full picture**

Find the hot spots instantly

As a frontline electrician you're often in the hot seat. People expect you to find electrical problems quickly and accurately. Now, you need no longer rely on your Infrared Thermometer to try to search for hot spots. Get the full picture instantly with the new affordable Fluke T19 Electrical - Thermal Imager.

What is thermal imaging

A thermal imager displays an image that uses different colors to represent different temperatures. This image makes it quick and easy to visually check surface temperatures and identify hot spots. Hot spots or rises in temperature often indicate that a problem exists or a failure could be imminent.

Now within your reach

The affordable Fluke T19 puts the power of thermal imaging into the hands of electricians and technicians who are most familiar with the installations. Just point, shoot and the image is captured. It is that easy.

Best in class image quality at this price

- Superior resolution to view more essential details
- Small details are visible in a perfectly focused image
- Large widescreen full VGA color LCD display

Easy to use

- Intuitive, three-button menu, simply navigate with the push of a thumb
- Adjustable focus

Rugged

- Withstands dust and water, IP54 rating
- Withstands a drop test of 2 metres
- Protective lens cover



**For more information and a FREE demonstration
Contact Fluke Australia:**

**P: +61 2 8850 3333
E: sales@fluke.com.au
W: www.fluke.com.au**

**For more information visit:
www.fluke.com.au**